



COVID -19 INFECTION PREVENTION

MAJ. ROBERT D. HOLLAND MD, MHA

CHIEF MEDICAL OFFICER

NEW YORK HEALTH + HOSPITALS CORPORATION

DR. SUSAN SMITH MCKINNEY NURSING + REHABILITATION CENTER



DR. SUSAN SMITH MCKINNEY

320 BED NURSING AND REHABILITATION
CENTER

594 ALBANY AVENUE
BROOKLYN NY



FIRST CASE OF COVID-19 AT MCKINNEY

- S.A. 88 year old female, long term resident of McKinney
- Past Medical History significant for CVA with hemiplegia, CKD stage 3, HTN, DM II, CAD, Spinal stenosis
- Symptoms – cough, temperature 100.5 F
- CXR – small bilateral focal infiltrates
- Differential diagnosis – Pneumonia, Influenza, CHF, COVID-19
- **PCR POSITIVE for COVID-19 on 20 March 2020**

FIRST WAVE OF COVID-19 AT MCKINNEY

20 March to 30 July 2020

More than 100 cases of COVID 19 among McKinney Residents

Minimal loss of life with 108 Residents recovered

Several residents were discharged to the community after their recovery

Teamwork and timely interventions helped us to navigate the First Wave

Lessons learned helped us to better prepare for the Second

INFECTION CONTROL CONSIDERATIONS

- We need to be a little more pro-active!



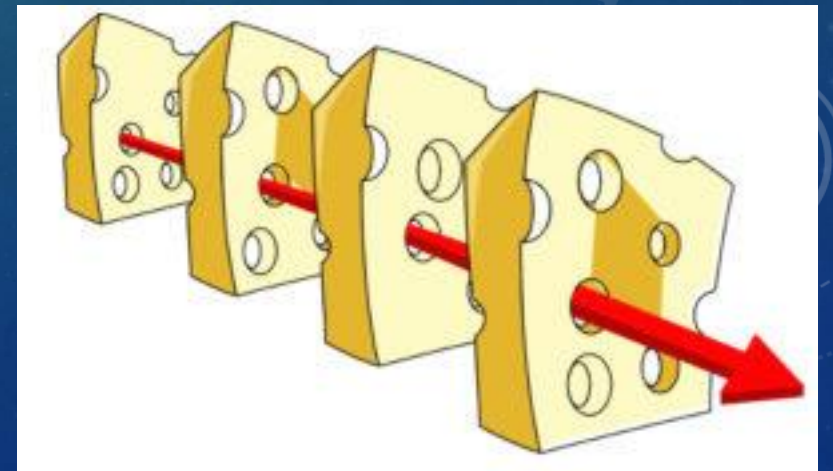
(This is not effective!)

THREE COHORTS TO CONSIDER

- Residents
 - Most vulnerable cohort due to age, comorbidities, residing at the facility
 - May not be able to understand the implications and take precautions for themselves (e.g. dementia)
 - At risk from staff, visitors, trips to clinic or Emergency Department, hemodialysis
- Employees
 - May work at more than one facility
 - Hard to account for actions outside of the work
- Visitors & Vendors
 - In-person visitation suspended – window visits, video chats via Rec Therapy Department
 - Vendor COVID status not always known – protect residents and staff without interrupting essential services

INFECTION CONTROL CONSIDERATIONS

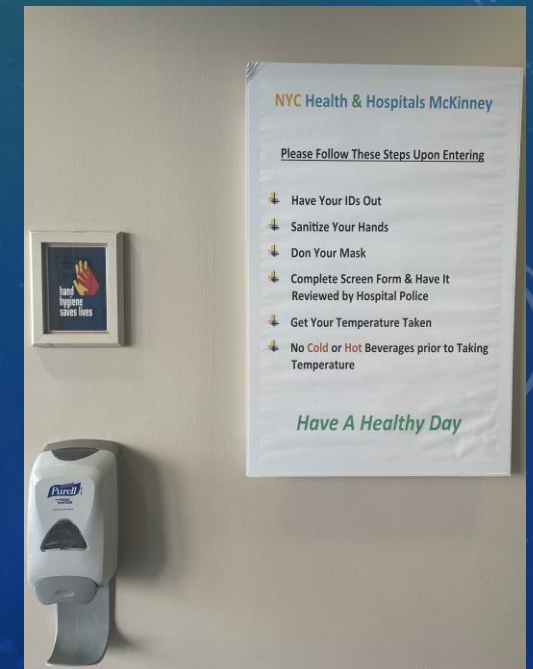
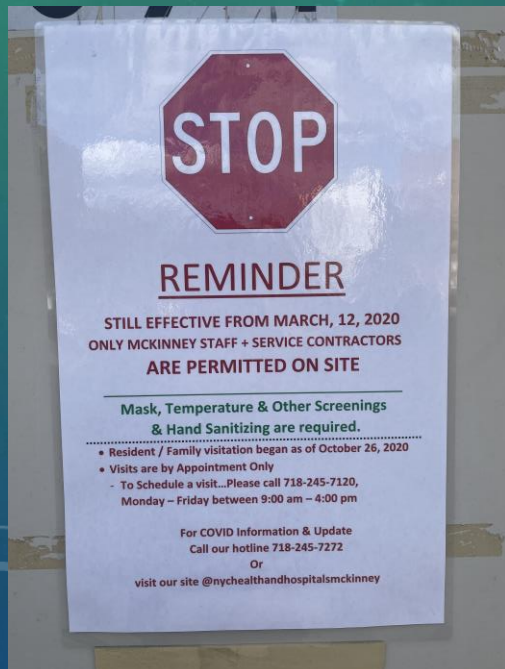
- Multi-modal - no one intervention by itself is perfect
- Have enough overlapping interventions in place to prevent resident, staff harm
- Teamwork and Buy-In are essential to success – Medicine, Nursing, Rehab, Dietary, Housekeeping, etc.



INFECTION CONTROL INTERVENTIONS

- Entry screening
- Testing of staff and residents
- PPE, Physical Barriers
- Admissions Unit
- COVID-19 Recovery Suite

INFECTION CONTROL BEGINS AT THE DOOR



SCREENING

- Employees & vendors complete form
- Touchless temperature
- PPE provided – face shield, surgical mask
- Social Distancing!



NYC HEALTH + HOSPITALS **McKinney** PAGE 1 of 2

CORONAVIRUS-19 SCREENING QUESTIONNAIRE

Enter Today's Date: **JAN 15 2021** Enter the Time: _____

My Name is (please print): _____ My body temperature is: _____ °F
Compassionate visitors do not record body temperature

☐ I am an **EMPLOYEE** Tour of Duty: ☐ TOUR I ☐ TOUR II ☐ TOUR III

List your Department: _____

☐ I am a **Visitor**

☐ I am a **Vendor** that works for (list name of Company): _____

List the name of the person/resident you are visiting: _____

List the Department you are visiting: _____

*All visitors and vendors will be issued a face mask and a face shield.
Both must be worn at all times when in the building.*

Screening Questions	Yes	No
1. Have you had any symptoms of COVID-19 in the past 14 days? <i>Fever of 100.4 degrees F, Chills, Cough, Shortness of Breath or Difficulty Breathing, Fatigue, Muscle or Body Aches, New Loss of Taste or Smell, Sore Throat, Congestion or Running Nose, Nausea or Vomiting, Diarrhea</i>		
2. Have you had a positive result from a COVID-19 test that tested saliva or used a nose or throat swab (not a blood test) in the past 14 days?		
3. Have you had close contact with a confirmed or suspected COVID-19 case (other than a resident in this facility) in the past 14 days?		
4. Have you or anyone in your household traveled in the United States in the past 14 days?		
5. Have you or anyone in your household traveled outside of the United States in the past 14 days?		

Updated 11/17/2020



EMPLOYEE COVID-19 TESTING CENTER



- Bi-weekly PCR testing of all McKinney staff
- Collaboration of OHS, Medicine & Nursing
- Allows for early identification of asymptomatic positive employees -> 14 day Quarantine

EMPLOYEE COVID-19 TESTING CENTER



SOCIAL DISTANCING



PHYSICAL BARRIERS





PERSONAL PROTECTIVE EQUIPMENT

- Minimum = Face Shield and Surgical Mask
- N95s available to any staff who requests
- FIT testing



NYC
HEALTH +
HOSPITALS | McKinney

Attention All Staff

Facemask:

Must be worn at all time, even on the staff lounge (except when eating).

Social Distancing:

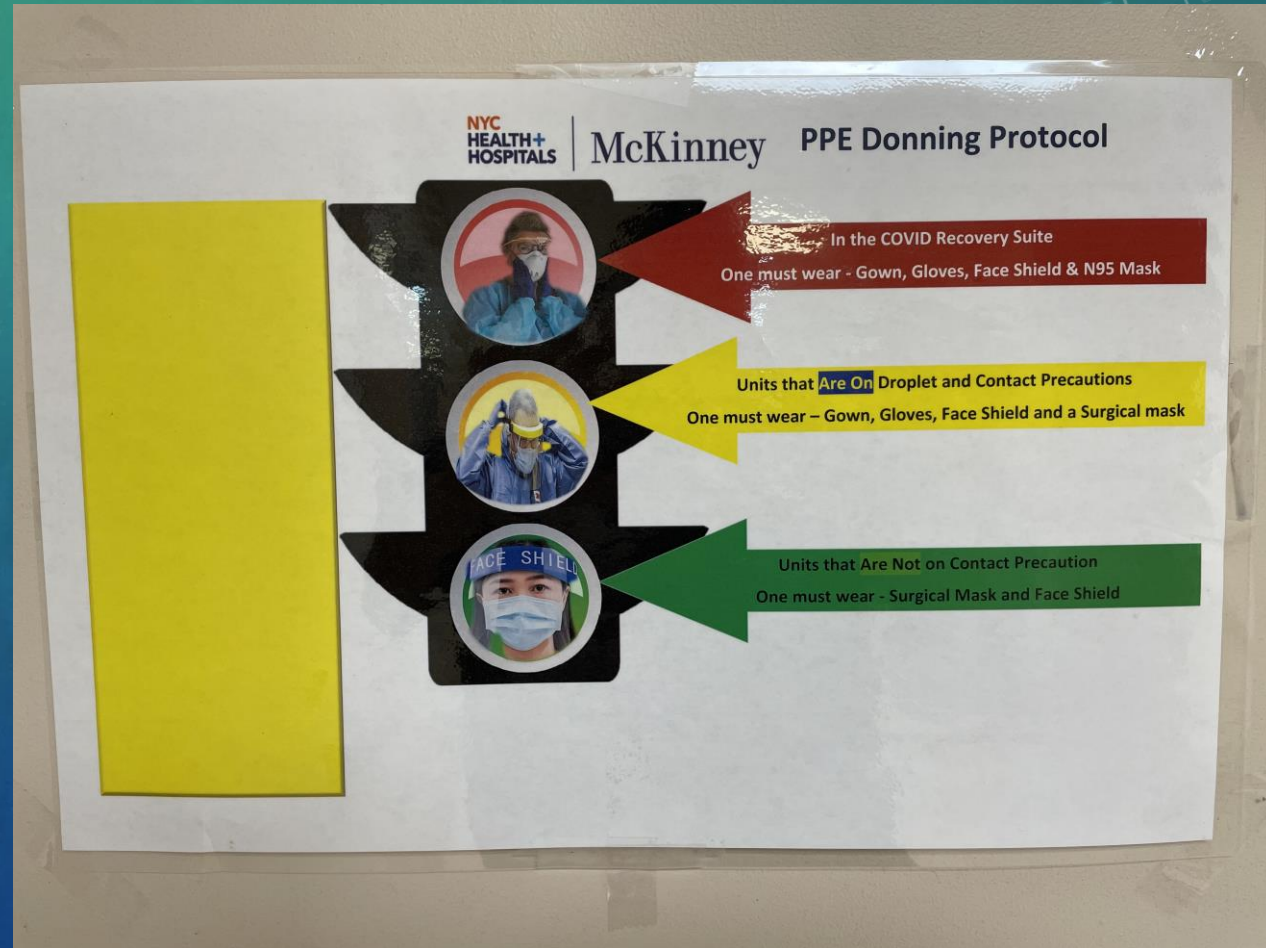
Always maintain 6 ft. distancing.

PPEs:

Should not be worn in the lounges (except for blue surgical mask).

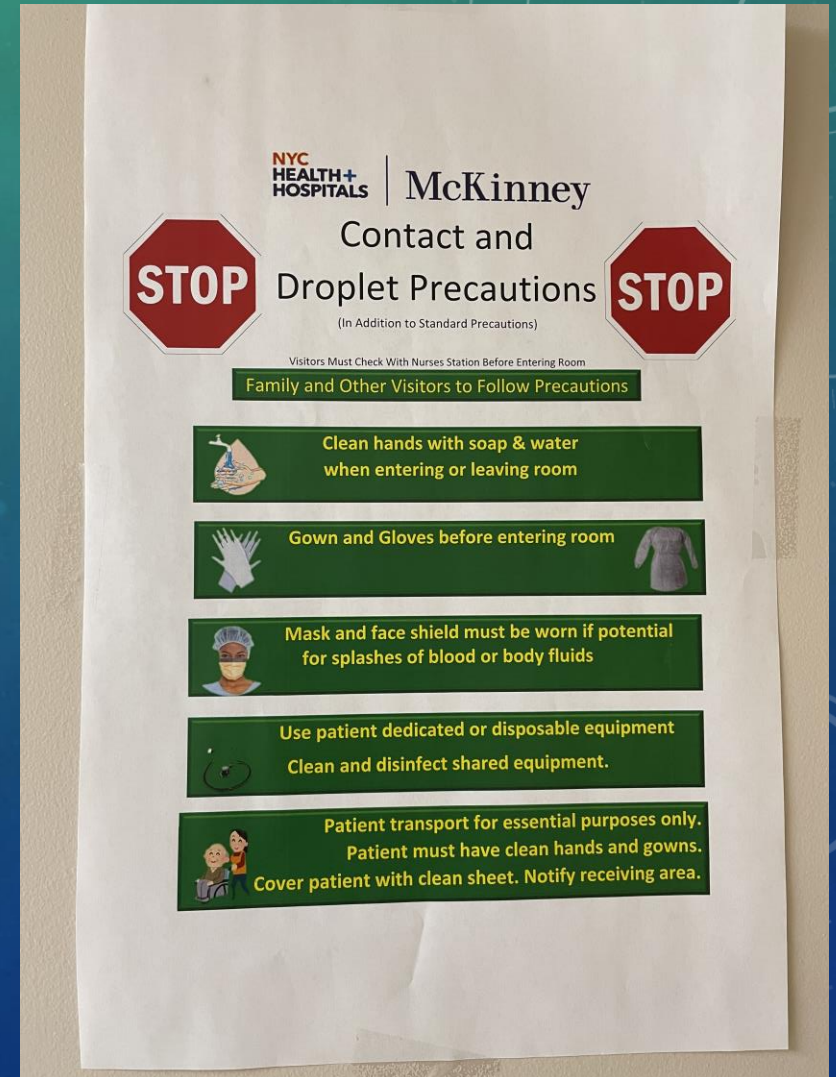
**"We Can Do This:
Let's Keep Each Other Safe"**

PERSONAL PROTECTIVE EQUIPMENT



PERSONAL PROTECTIVE EQUIPMENT

- Any nursing unit with a positive employee or resident placed on Contact & Droplet Precautions for 14 days



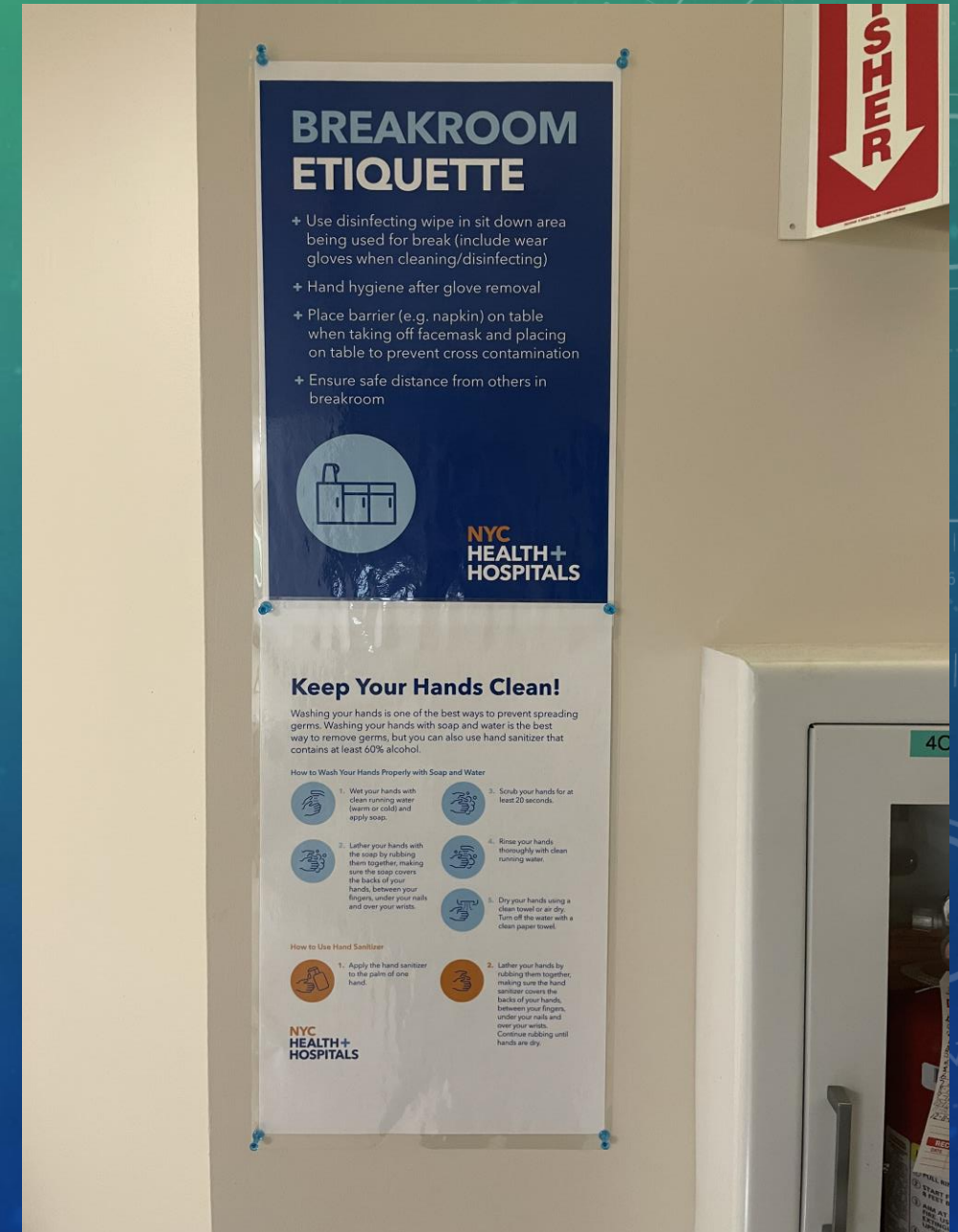
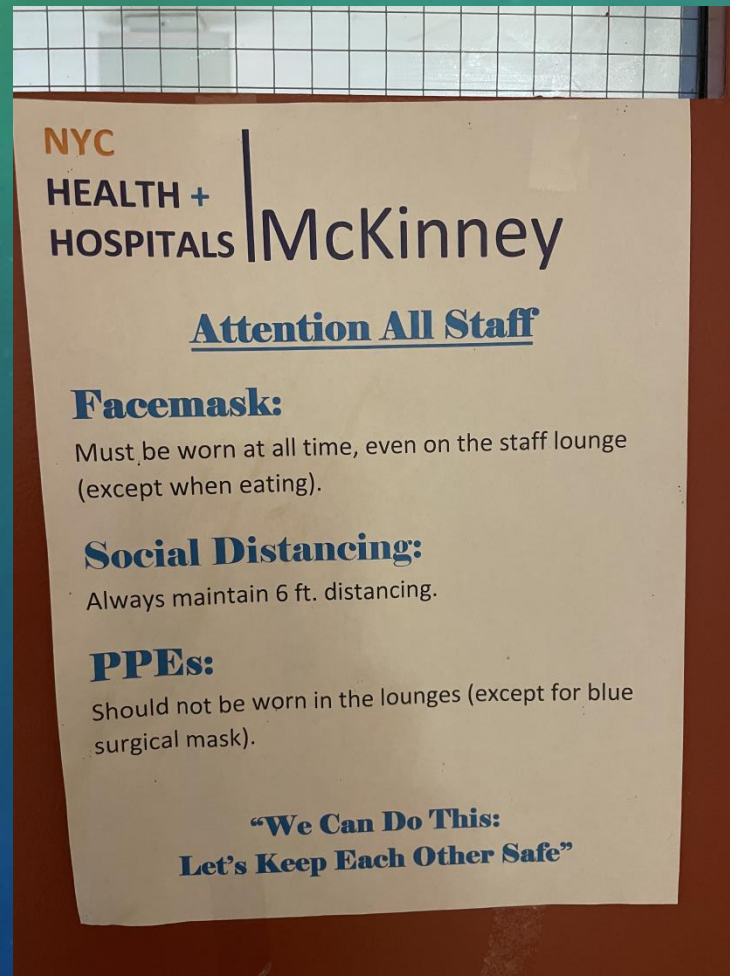
HAND HYGIENE AND ETIQUETTE

Hand hygiene still #1

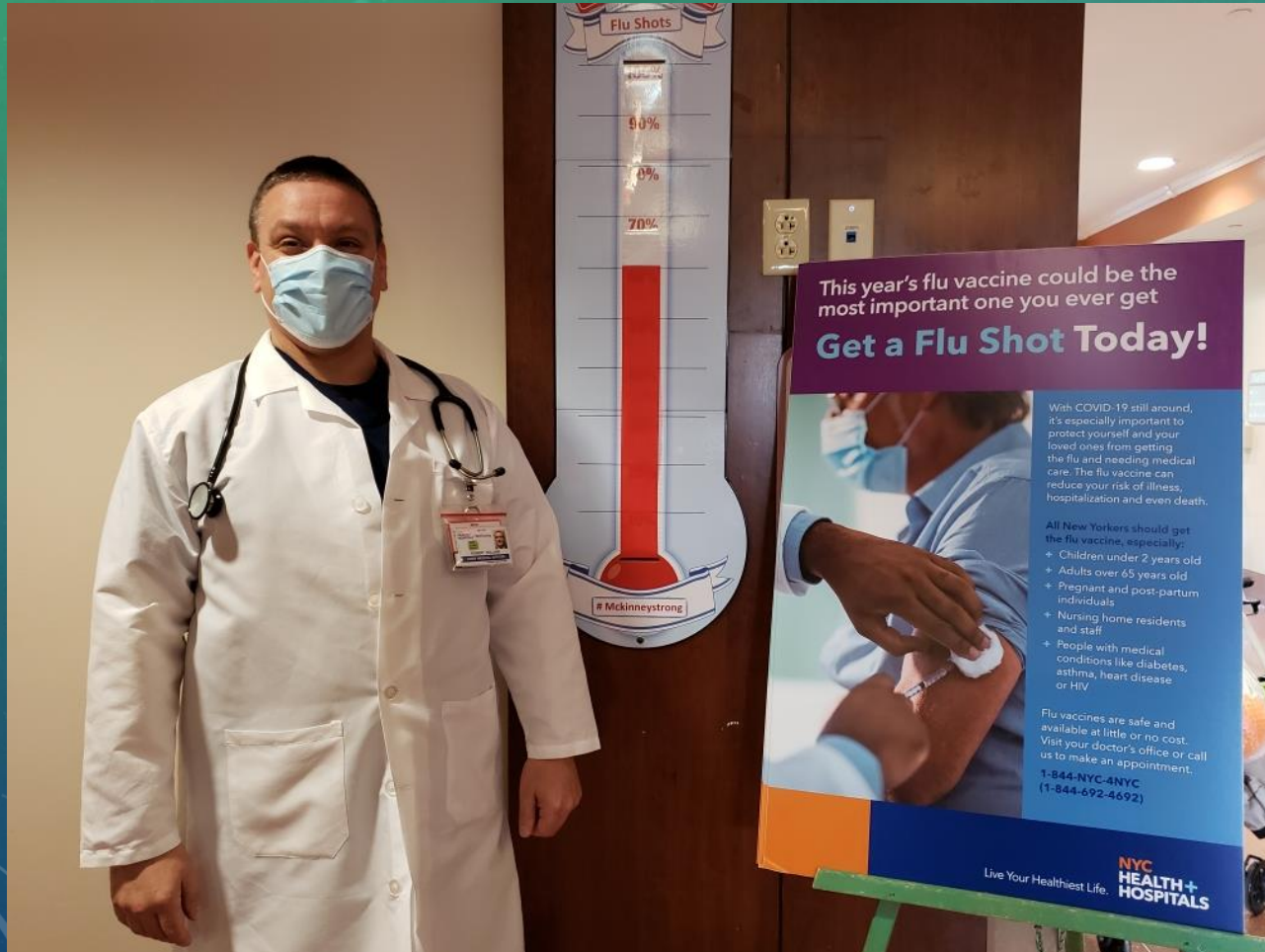
“See something, say something” attitude in regards to PPE use.

Education, education, education

Minimize in person meetings



DON'T FORGET YOUR FLU SHOT!



This year's flu vaccine could be the most important one you ever get

Get a Flu Shot Today!



With COVID-19 still around, it's especially important to protect yourself and your loved ones from getting the flu and needing medical care. The flu vaccine can reduce your risk of illness, hospitalization and even death.

All New Yorkers should get the flu vaccine, especially:

- + Children under 2 years old
- + Adults over 65 years old
- + Pregnant and post-partum individuals
- + Nursing home residents and staff
- + People with medical conditions like diabetes, asthma, heart disease or HIV

Flu vaccines are safe and available at little or no cost. Visit your doctor's office or call us to make an appointment.

1-844-NYC-4NYC
(1-844-692-4692)

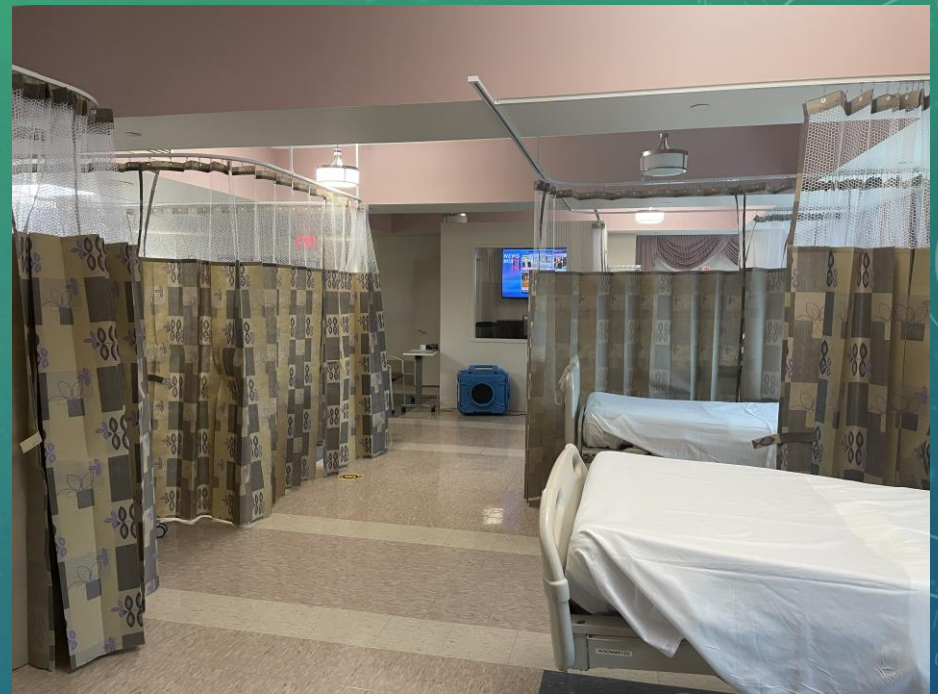
Live Your Healthiest Life. **NYC HEALTH + HOSPITALS**

ADMISSIONS

- During the First Wave McKinney was challenged with accepting patients from acute care in various degrees of recovery from COVID-19
- Pre-admissions testing not always a reliable indicator of COVID status
- Challenge was to maintain occupancy and assist in through-put from acute care without exposing existing resident population and staff

ADMISSIONS UNITS

- Self-contained, 4-bedded admissions units
- Utilized now un-utilized Resident dining areas
- Two units which alternate admission days
- Droplet and contact precautions, N95s for staff
- Residents are PCR tested on admission
- Once the cohort is cleared, residents are moved to their room within the facility (remain on droplet and contact precautions for 14 days from admission)
- Staffed by RN, PCA/T



RESIDENT TESTING

- The resident population is PCR tested twice weekly (Mondays and Thursdays)
- Twice weekly testing regardless of community positivity rates
- Allows for early identification and quarantine of positive residents
- Team effort – Medicine, Nursing, Laboratory Services

COVID-19 RECOVERY UNIT

- Conversion of the suspended Adult Day Health Center during First Wave
- “Mini-ICU” within McKinney
 - Close monitoring, supplemental oxygen, suction, AED, crash cart, HEPA filter
- Geographically separated from Nursing Units
- 1:1 Staffing ratio (Nurse, PCA/T, MD/NP to residents)
- Positive Residents are quarantined for 14 days, negative PCR test required before graduating back to nursing unit



COVID-19 RECOVERY UNIT



COVID-19 RECOVERY UNIT



NEXT STEPS

- Incorporation of rapid antigen tests into Employee and Resident testing strategy
- Continue COVID-19 vaccination of Residents and Staff
- Monoclonal antibody therapy (Bamlanivimab)

SUMMARY

- COVID 19 infection prevention in the Nursing Facility is a challenge!
- The Resident population is high risk and front line staff may inadvertently bring COVID-19 to the facility
- Therefore, Infection Prevention in the Nursing Facility:
 - Must be Multi-Modal
 - Include frequent testing of Residents and Staff
 - Involve everyone – Team Effort
 - Have buy-in from all stakeholders
 - Be adaptable
 - Must stay up to date



THANK YOU!